

# ENCORE EXTRA

## PRODUCT DETAILS

Specification		Features
Pile Weight:	1600 gr/m <sup>2</sup>	Regular nationwide delivery service.
Total Weight:	2570 gr/m <sup>2</sup>	Easy to clean
Width:	4m & 5m (Stripes 4m only)	Suitable for underfloor heating
Pile Content:	Polypropylene	2 ply, soft yarn
Backing:	Action Back	
Origin:	UK	
Suitability:	Heavy Domestic	
Warranty:	15 Years	

### Installation

To be installed in accordance with 8S5323 'Code of Practice for the Installation of Floor Coverings' and NICF manual.

Pattern match cannot be guaranteed with any tufted patterned carpet. For quantity orders requiring colour matching, please state at the time of ordering. All samples may not be from the same production batch as current stock and therefore should be used as a guide and not as an exact match.

Colour variations: There may be colour variations/shade variations between each batch of carpet as well as with undyed materials.

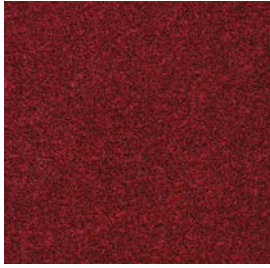
### Maintenance

Carpetline Direct recommend that this carpet is maintained in accordance with an agreed maintenance schedule which should include the following:

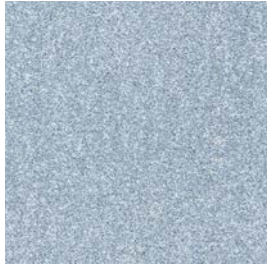
- i). Vacuum regularly.
- ii). Remove spills immediately.
- iii). Professionally clean as required.

# ENCORE EXTRA

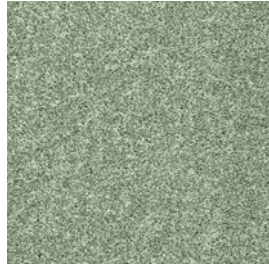
## PRODUCT DETAILS



Red 001



Blue 001



Green 001



Beige 001



Beige 002



Beige 003



Brown 015



Brown 001



Brown 003



Brown 002



Brown 004



Grey 001



Grey 002



Grey 050



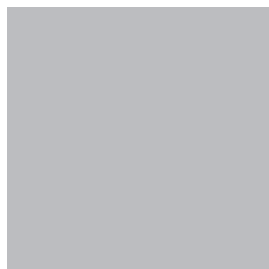
Grey 100



Grey 003



Grey 063



TBC

# ENCORE EXTRA - STRIPES

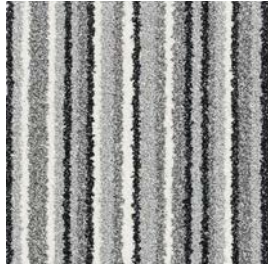
PRODUCT DETAILS



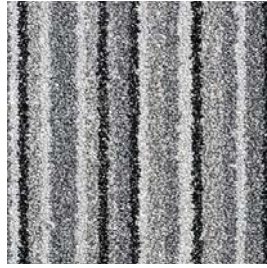
Red Stripe 001



Brown Stripe 001



Grey Stripe 001



Grey Stripe 002