

KIHAR TWIST

PRODUCT DETAILS

Specification		Features
Pile Weight:	1220 gr/m ²	Regular nationwide delivery service.
Total Weight:	2095 gr/m ²	Easy to clean
Width:	4m & 5m	Suitable for underfloor heating
Pile Content:	Polypropylene	
Backing:	Action Back	
Origin:	UK	
Suitability:	General Domestic	
Warranty:	10 Years	

Installation

To be installed in accordance with 8S5323 'Code of Practice for the Installation of Floor Coverings' and NICF manual.

Pattern match cannot be guaranteed with any tufted patterned carpet. For quantity orders requiring colour matching, please state at the time of ordering. All samples may not be from the same production batch as current stock and therefore should be used as a guide and not as an exact match.

Colour variations: There may be colour variations/shade variations between each batch of carpet as well as with undyed materials.

Maintenance

Carpetline Direct recommend that this carpet is maintained in accordance with an agreed maintenance schedule which should include the following:

- i). Vacuum regularly.
- ii). Remove spills immediately.
- iii). Professionally clean as required.

KIHAR TWIST

PRODUCT DETAILS



Cream 001



Brown 010



Brown 007



Brown 011



Brown 009



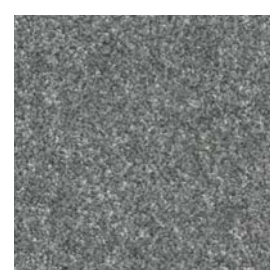
Brown 050



Brown 101



Grey 006



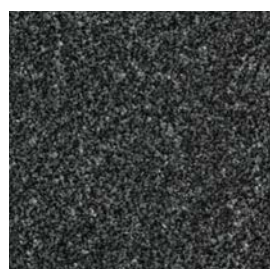
Grey 053



Grey 054



Grey 102



Grey 103